



Shiraj Tower, 201 Commercial Road
London

Guide Price **£325,000**



Shiraj Tower, London

Two bedroom set on the first floor of Meridian Court, a two bedroom private flat conveniently situated on Commercial Road and close to the city.

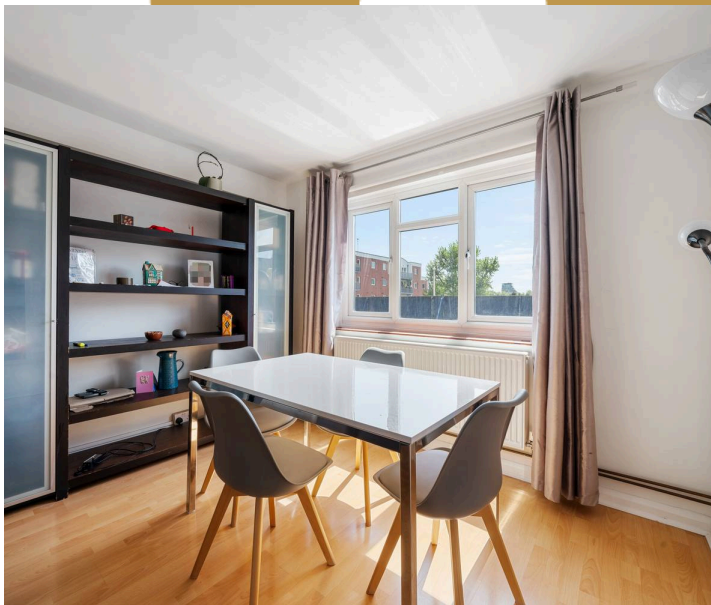
Council Tax band: TBD

Tenure: Leasehold

EPC Energy Efficiency Rating: C

EPC Environmental Impact Rating: D

- Two bedroom
- Central Location
- Bright & Airy throughout
- Great Investment Opportunity

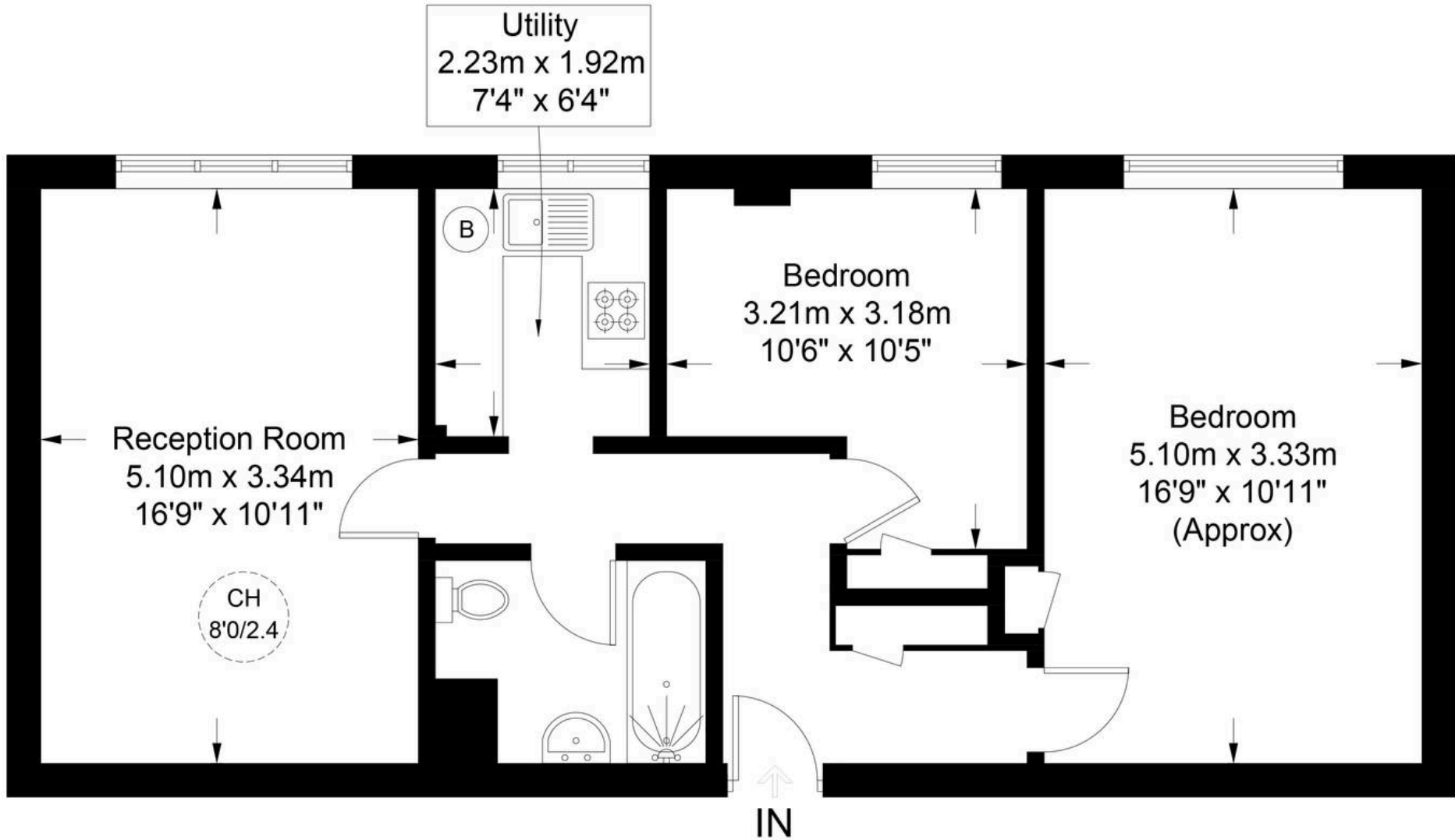


M



Shiraj Tower, E1

Approximate Gross Internal Area = 674 sq ft / 62.6 sq m



Second Floor



This plan is for layout guidance only. Not drawn to scale unless stated. Windows and door openings are approximate. Whilst every care is taken in the preparation of this plan, please check all dimensions, shapes and compass bearings before making any decisions reliant upon them. (ID858507)



Austin Homes

Studio 36 Regus, 167 City Road, London - EC1Y 1AW

0207 981 2586 • info@austinhomes.london • austinhomes.london

AUSTIN
HOMES