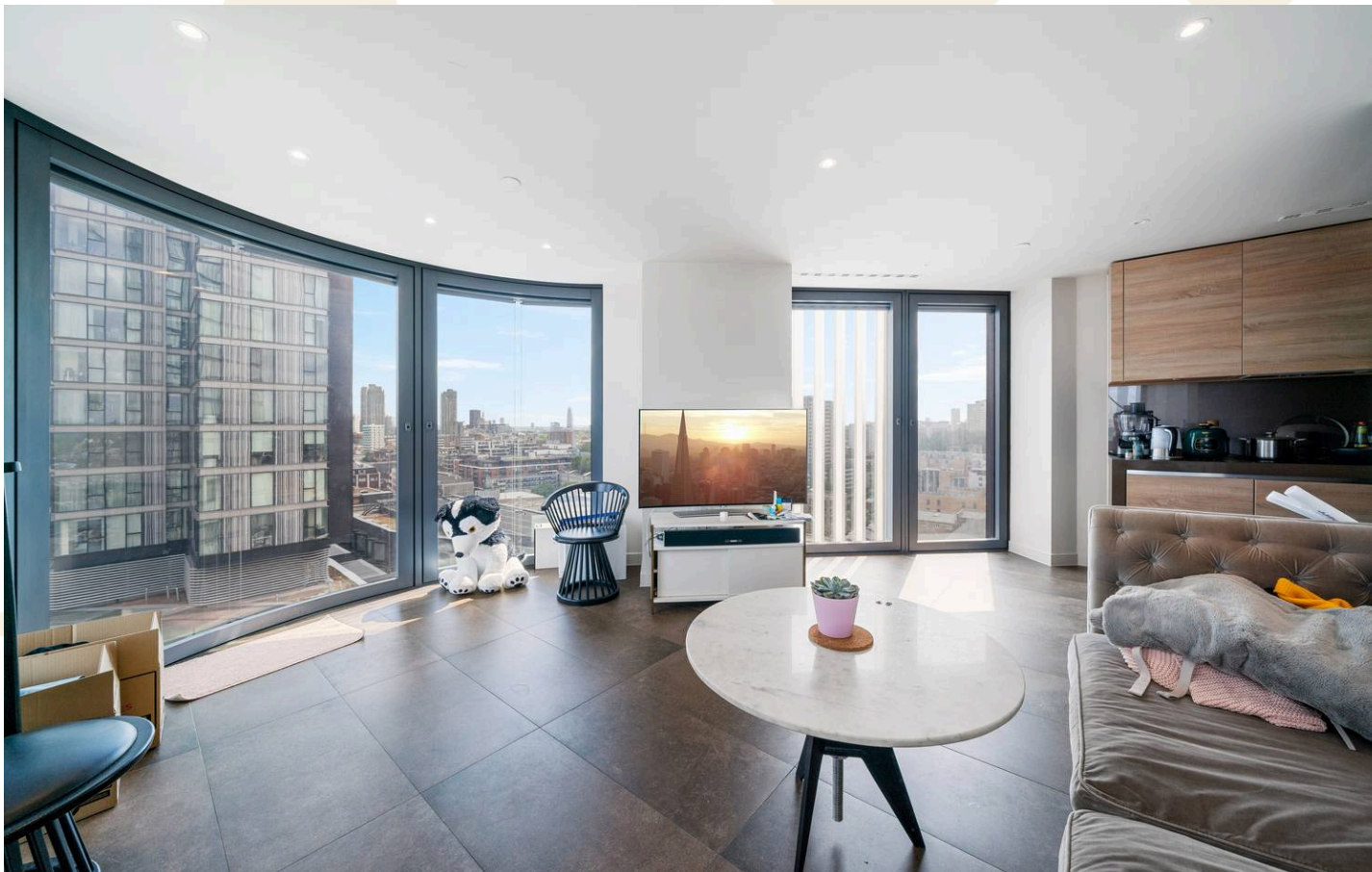




Flat 58, Chronicle Tower 261B City Road, London
London

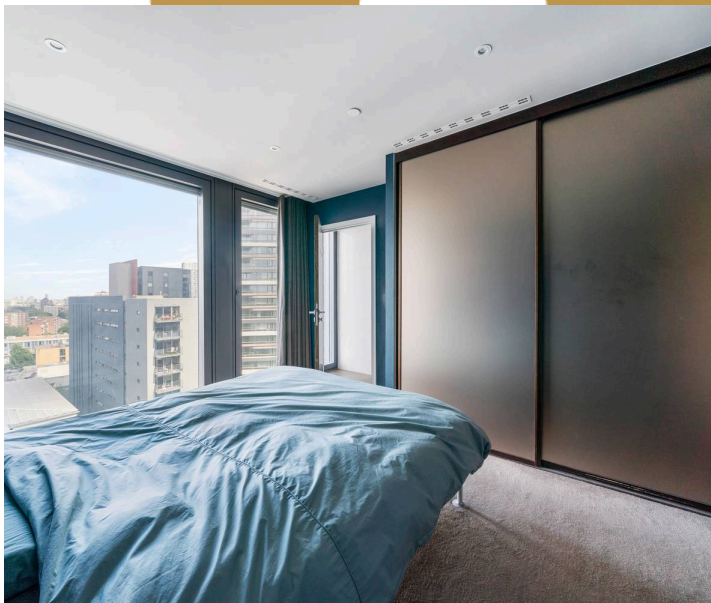


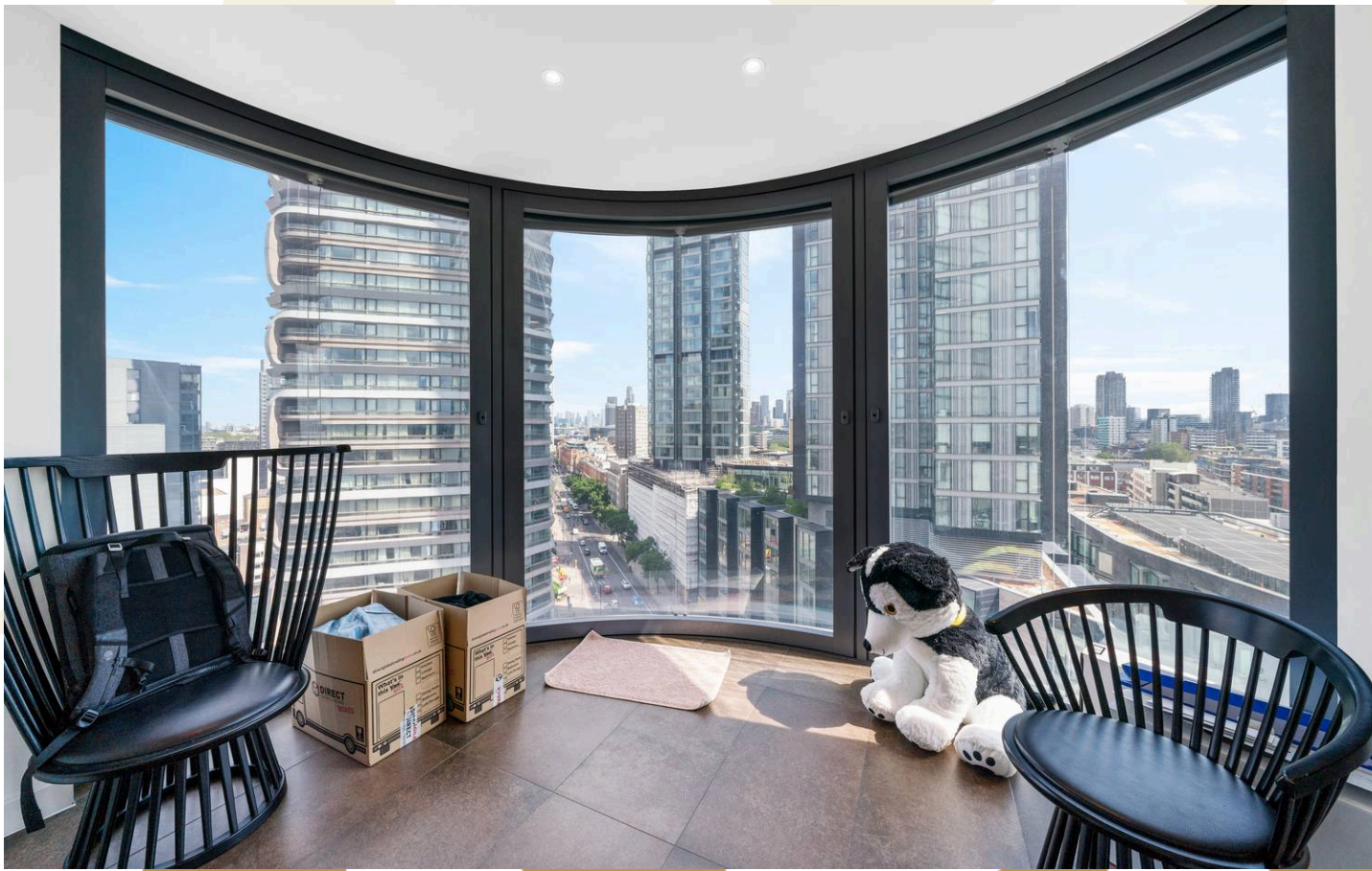
Flat 58

Chronicle Tower 261B City Road, London

Luxurious 2-bed apartment in prime location with modern living features. Spacious living area, chef's kitchen, secure entry, lift access, en-suite master bedroom, underground parking. High-end furnishings & nearby amenities. 24-hr concierge, gym, pool for ultimate city living. Contact us now for a viewing!

- Video Entry
- Close to public transport
- Underground parking available via separate negotiation
- Lift Access
- Shops and amenities nearby
- Fully Furnished
- En-suite
- 24 Hour Concierge
- Gym & Swimming Pool





Bedroom 1
13' 7" x 10' 11" (4.13m x 3.32m)

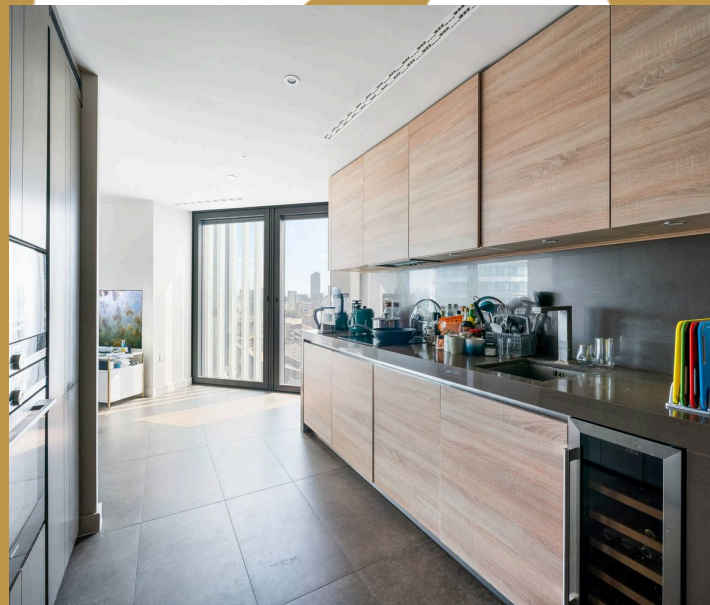
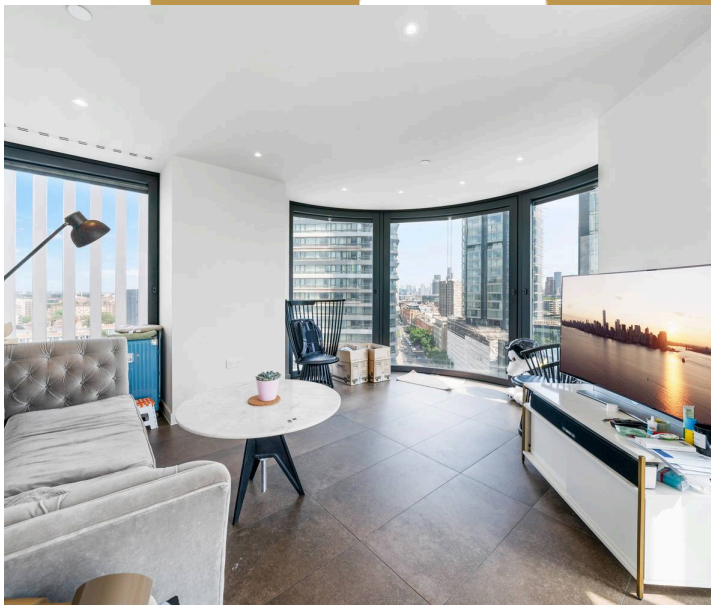
Bedroom 2
12' 8" x 12' 5" (3.86m x 3.79m)

Reception
20' 3" x 16' 1" (6.18m x 4.90m)

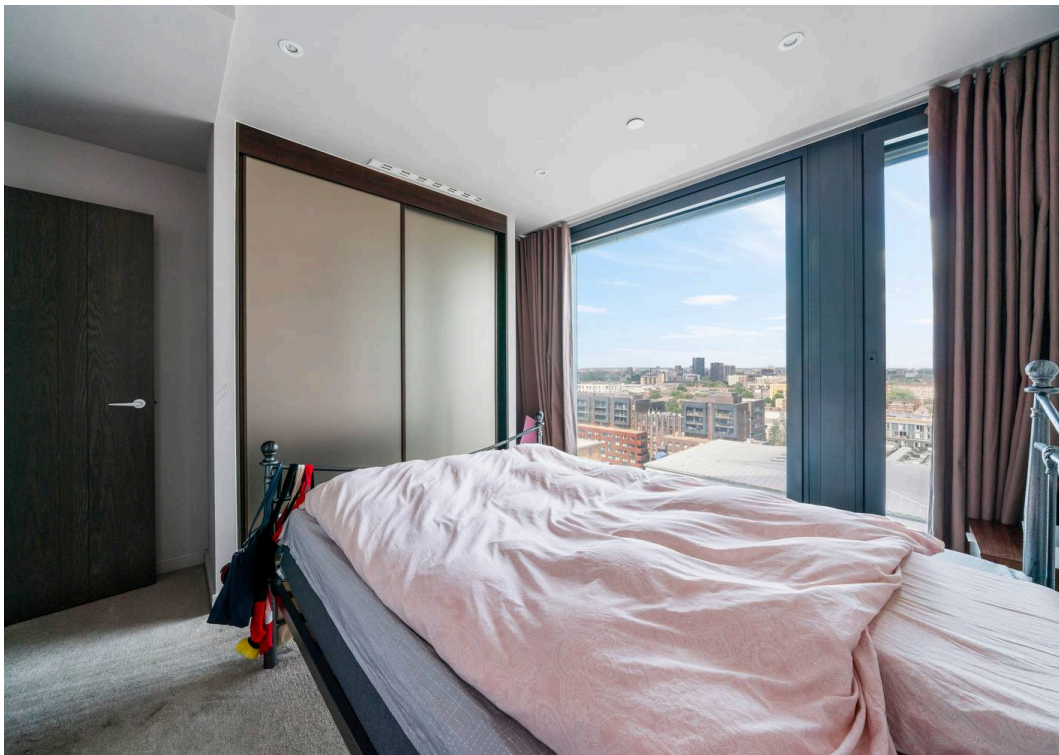
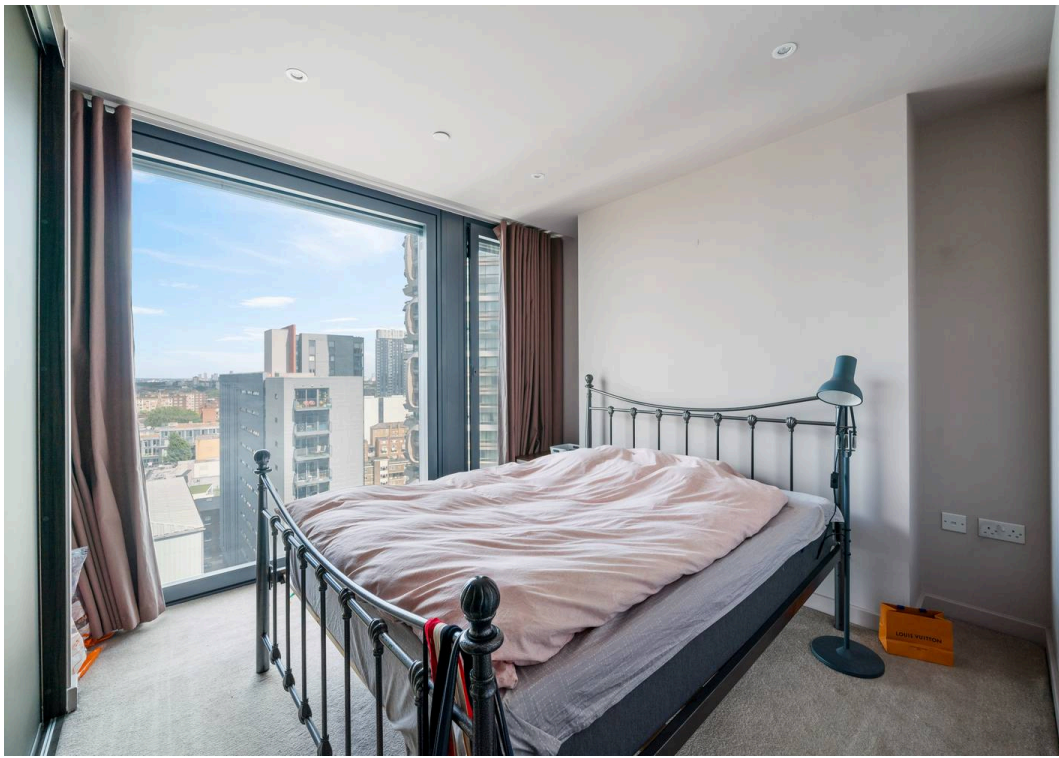
Kitchen
12' 9" x 8' 7" (3.88m x 2.62m)

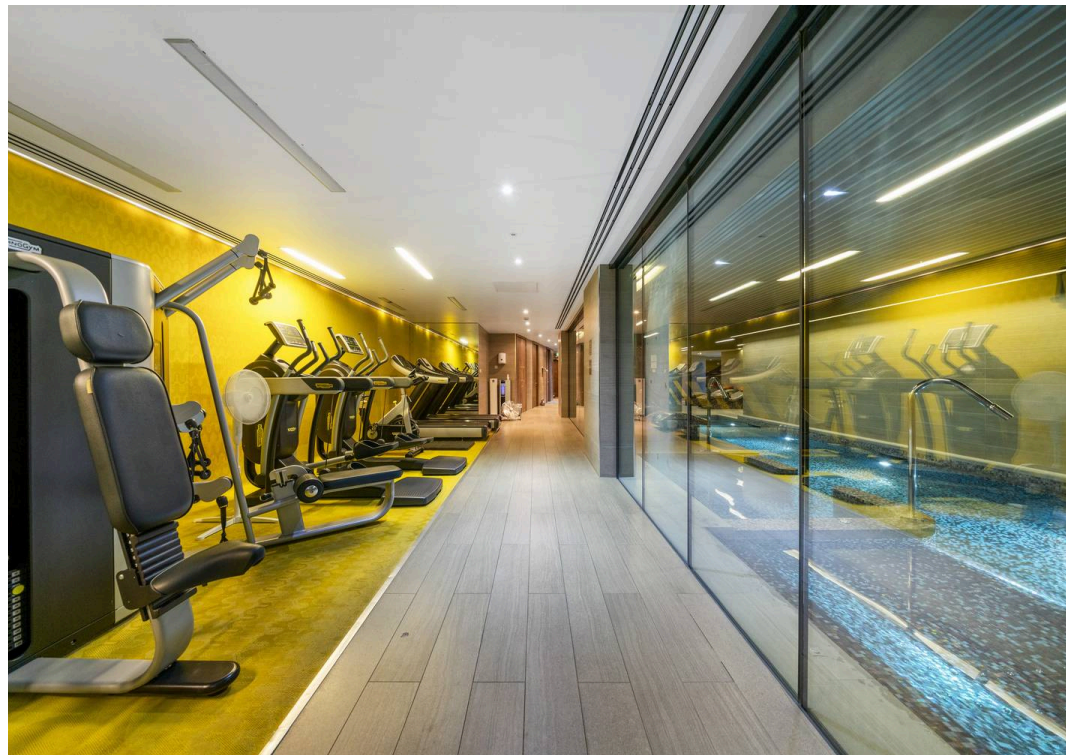
Bathroom

En-suite



M

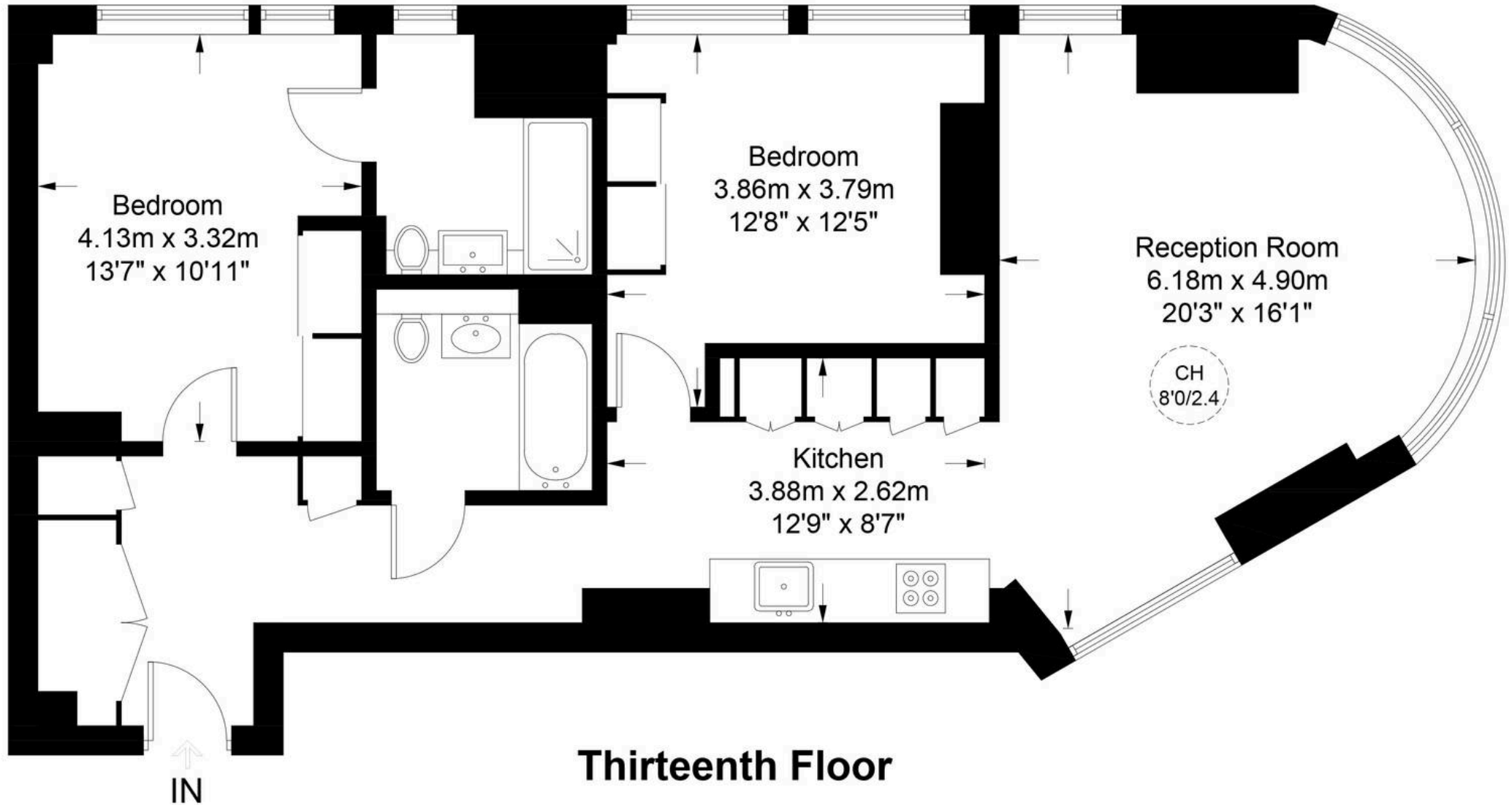






Chronicle Tower, EC1V

Approximate Gross Internal Area = 901 sq ft / 83.7 sq m



Thirteenth Floor



This plan is for layout guidance only. Not drawn to scale unless stated. Windows and door openings are approximate. Whilst every care is taken in the preparation of this plan, please check all dimensions, shapes and compass bearings before making any decisions reliant upon them. (ID979668)



Austin Homes

Studio 36 Regus, 167 City Road, London - EC1Y 1AW

0207 981 2586 • info@austinhomes.london • austinhomes.london

**AUSTIN
HOMES**