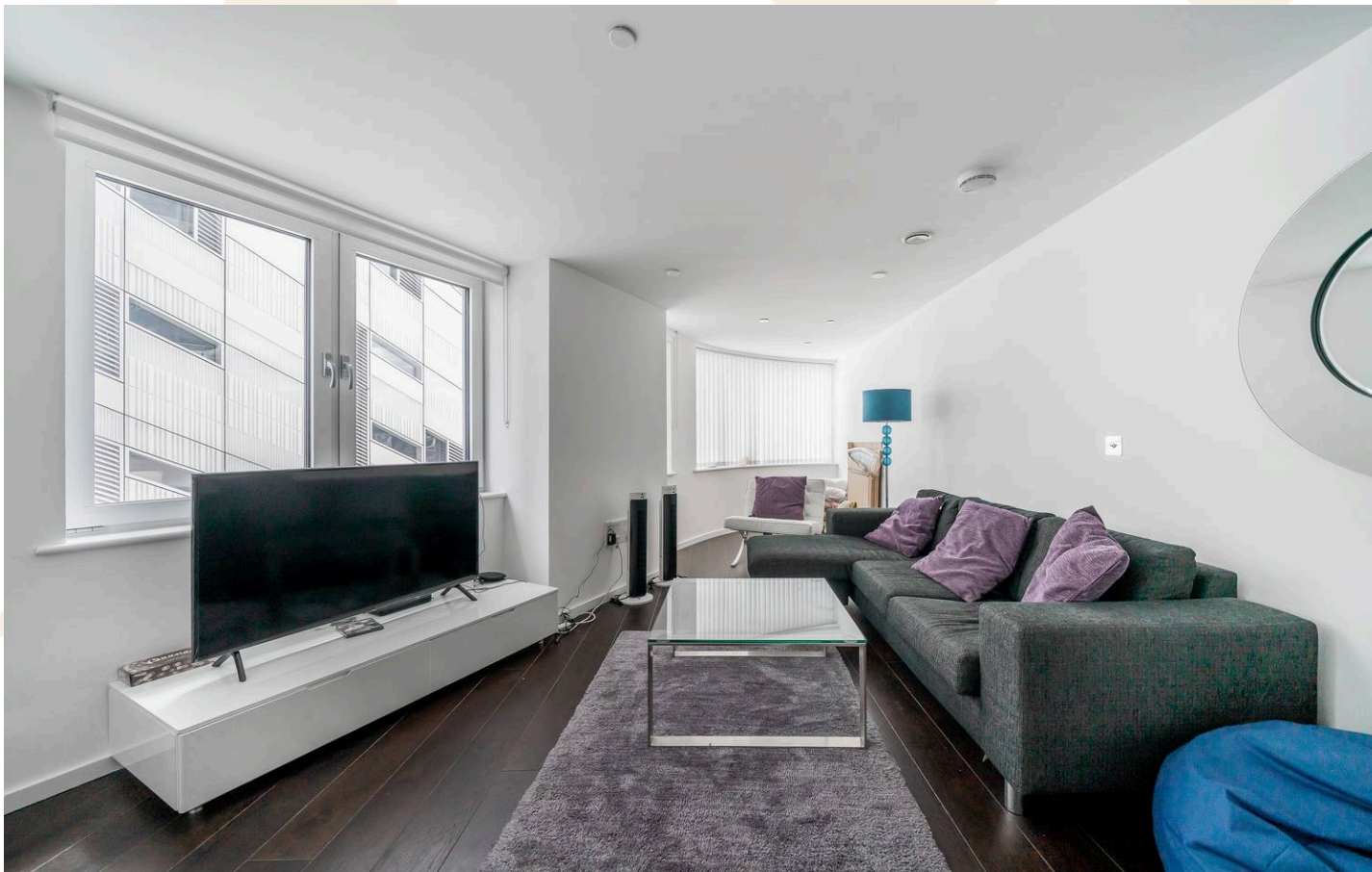




Eagle Point City Road, London
London



Eagle Point City Road, London

Luxurious 2 bed apartment in prestigious city complex, boasting modern design and premium amenities. Open-plan living, on-site gym/pool, concierge service. Perfect urban lifestyle opportunity.

Council Tax band: F

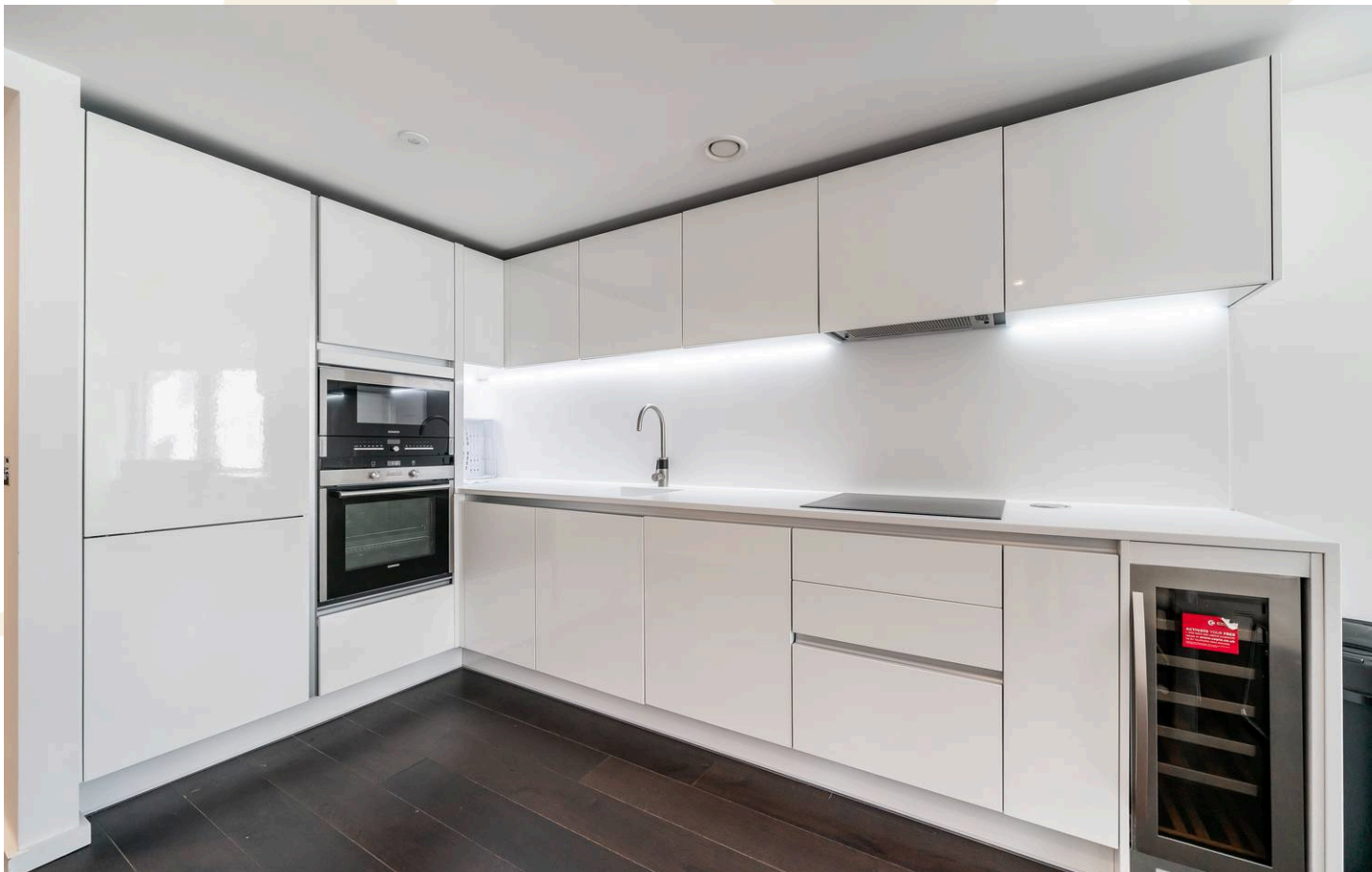
Tenure: Leasehold

EPC Energy Efficiency Rating: B

EPC Environmental Impact Rating:

- Fully Furnished
- Gym
- Swimming Pool
- Video Entry
- Shops and amenities nearby
- Concierge
- Close to public transport





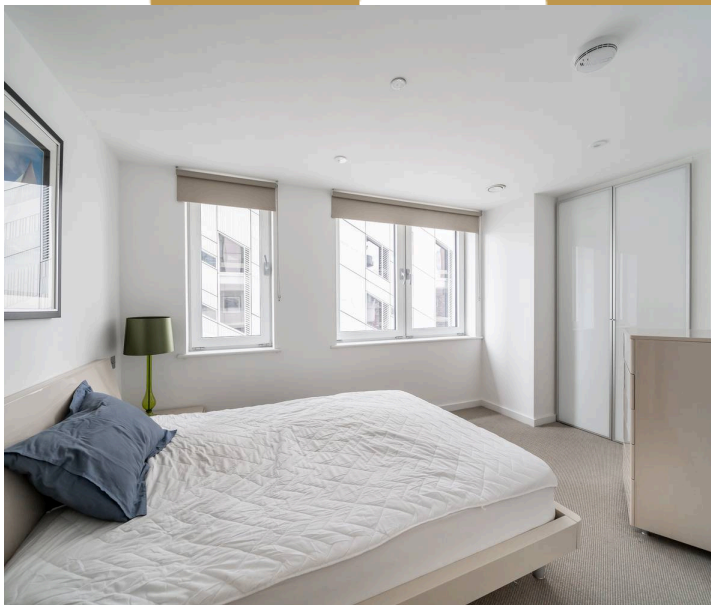
Reception / Kitchen
52' 7" x 14' 11" (16.02m x 4.55m)

Bedroom
11' 4" x 10' 2" (3.46m x 3.10m)

Bedroom
13' 6" x 12' 6" (4.12m x 3.80m)

En-suite

Bathroom

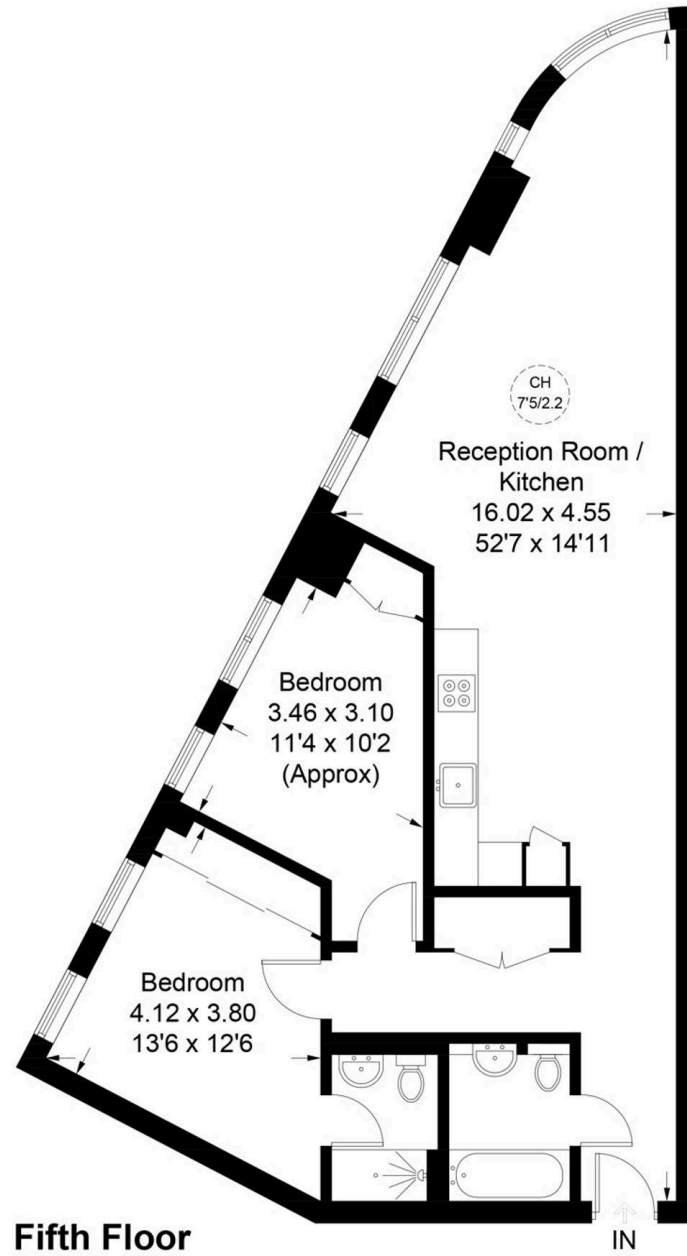


M



Eagle Point

Approximate Gross Internal Area = 82.2 sq m / 885 sq ft



Fifth Floor

Illustration for identification purposes only, measurements are approximate, not to scale. floorplansUsketch.com © (ID651804)



Austin Homes

Studio 36 Regus, 167 City Road, London - EC1Y 1AW

0207 981 2586 • info@austinhomes.london • austinhomes.london

AUSTIN
HOMES