



71G Drayton Park, London
London

AUSTIN HOMES

71G Drayton Park, London

Council Tax band: E

Tenure: Leasehold

EPC Energy Efficiency Rating: C

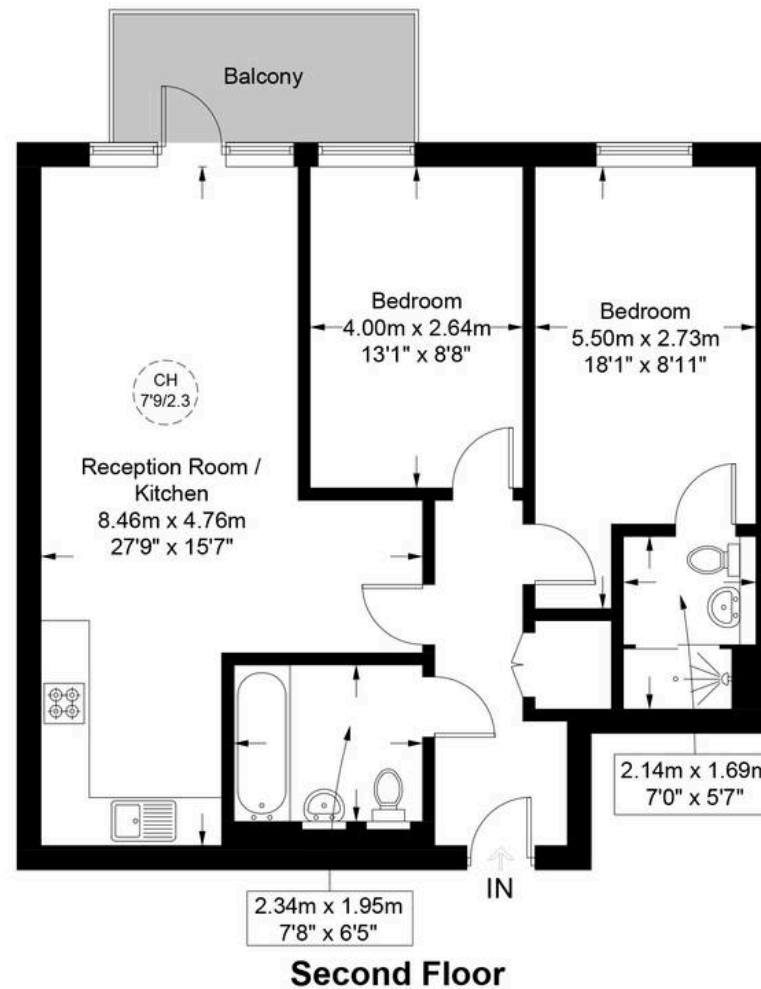
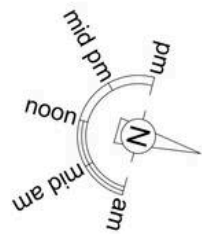
EPC Environmental Impact Rating: C





Drayton Park, N5

Approximate Gross Internal Area = 770 sq ft / 71.5 sq m



This plan is for layout guidance only and is not drawn to scale unless stated. All dimensions, including windows, doors, and the Total Gross Internal Area (GIA), are approximate. For precise measurements, please consult a qualified architect or surveyor before making any decisions based on this plan.



**Certified
Property
Measurer**



Austin Homes

White Collar Factory 1a Old Street Yard, London - EC1Y 8AF

0207 981 2586 • info@austinhomes.london • austinhomes.london

AUSTIN
HOMES