



Flat 146, Eagle Point City Road, London
London



Eagle Point City Road, London

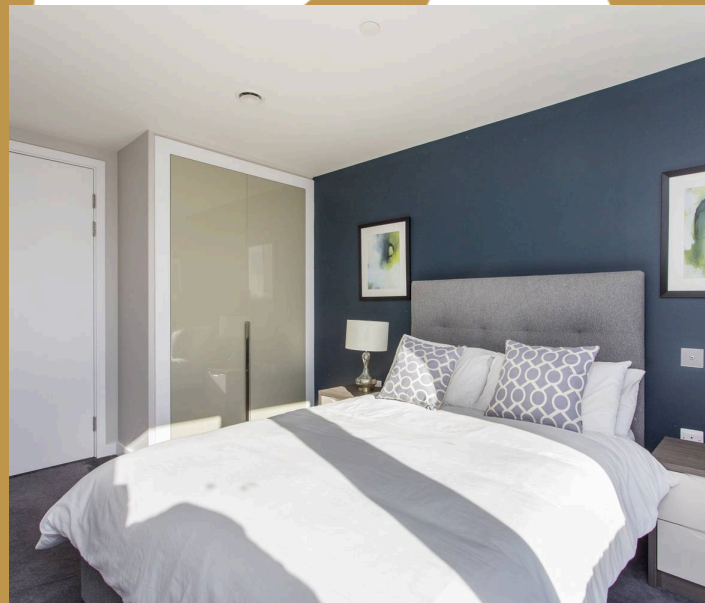
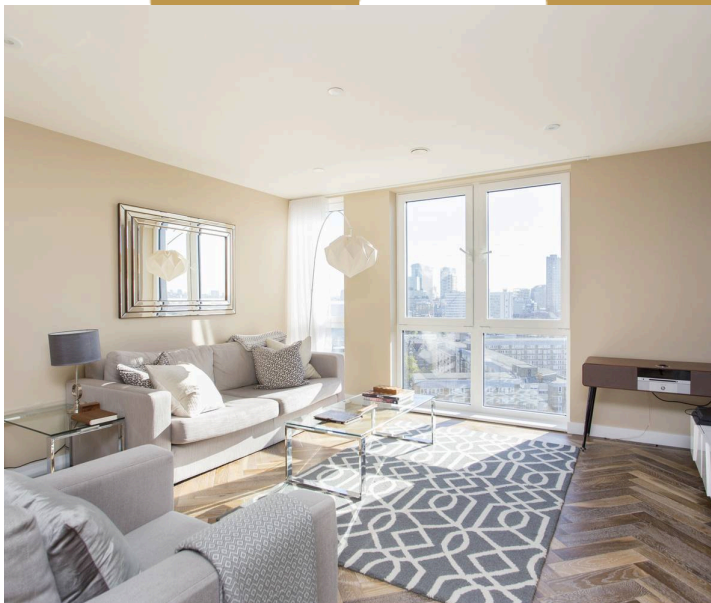
Council Tax band: F

Tenure: Leasehold

EPC Energy Efficiency Rating: B

EPC Environmental Impact Rating: B

- Fully Furnished
- Close to public transport
- Video Entry





Bedroom
14' 6" x 9' 7" (4.41m x 2.93m)

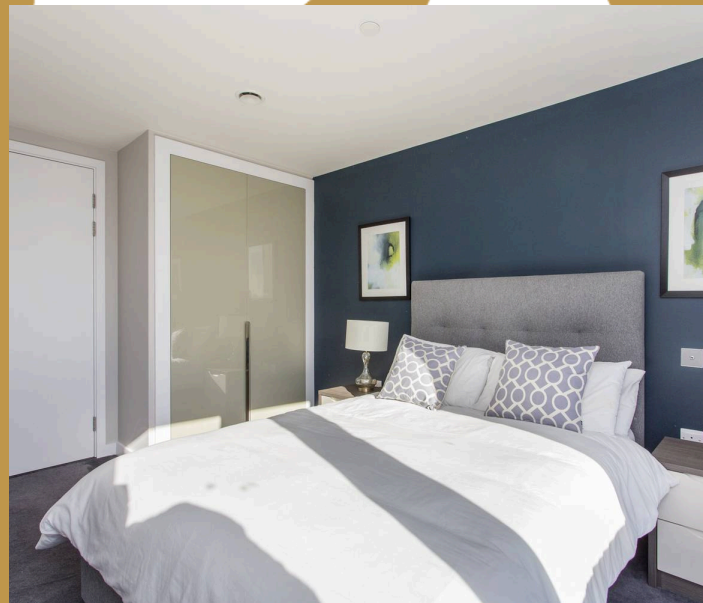
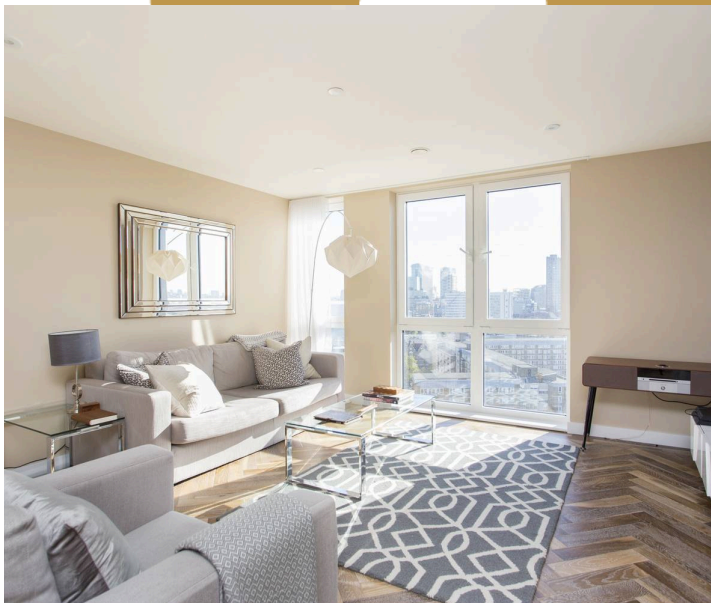
Bedroom
13' 1" x 9' 7" (4.00m x 2.91m)

Reception
30' 1" x 13' 10" (9.16m x 4.21m)

Kitchen
7' 10" x 6' 2" (2.40m x 1.88m)

Bathroom

En-suite

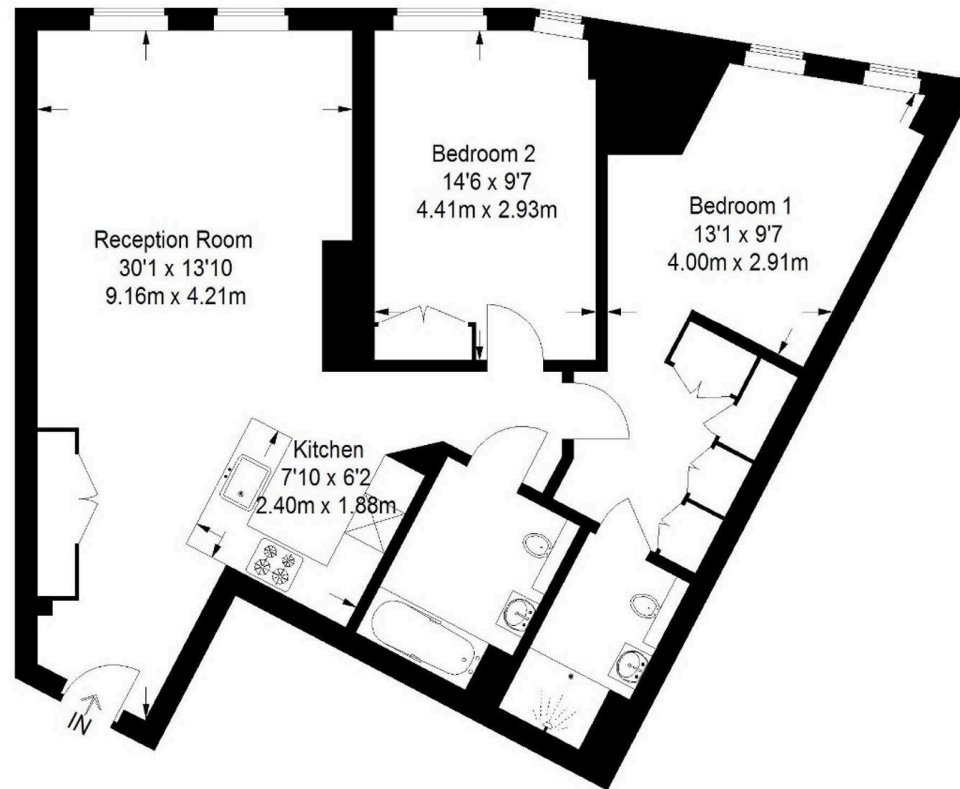


M



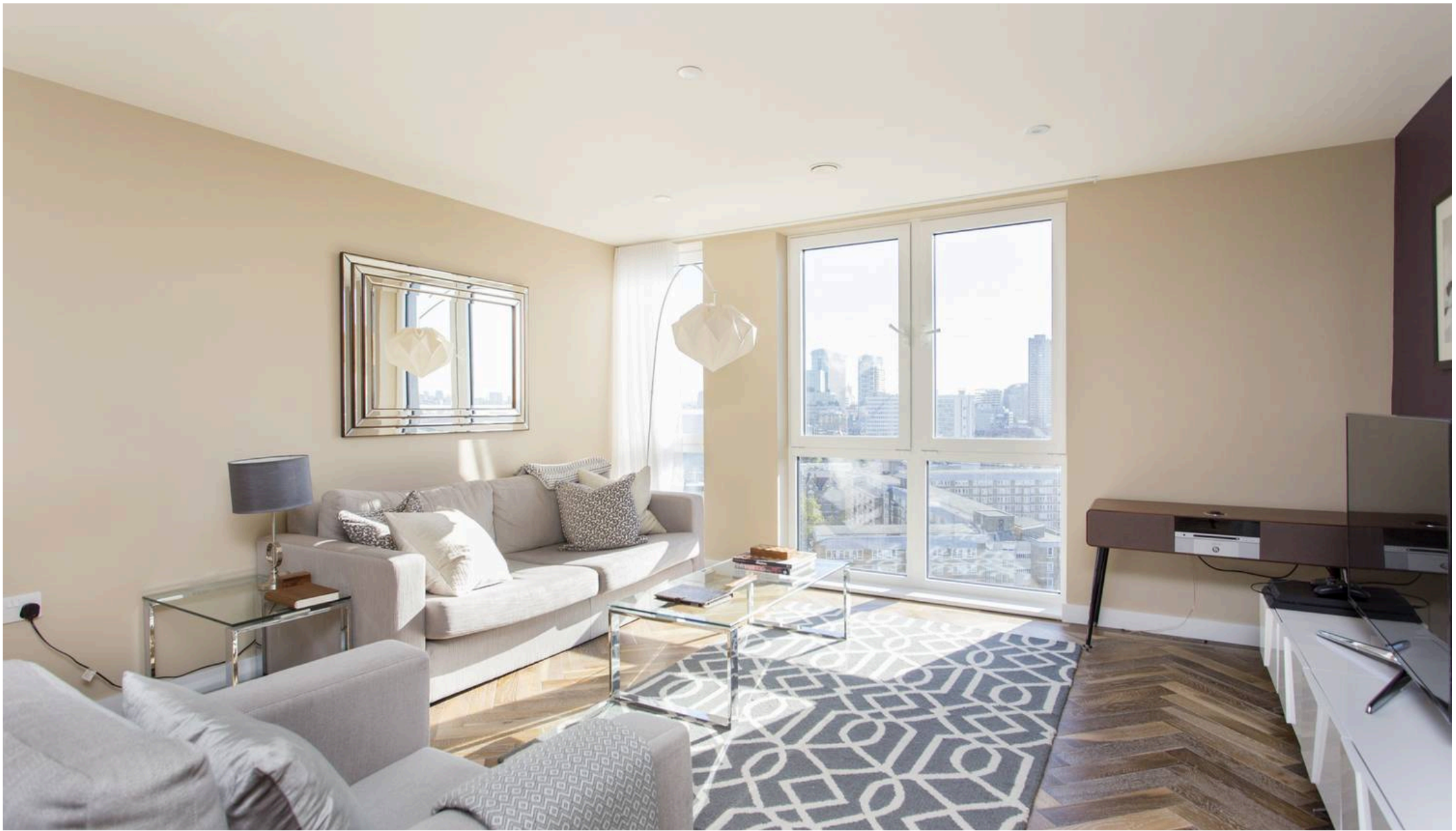
Eagle Point

Approximate Gross Internal Area
83.5 sq m / 899 sq ft



83.5 sq m / 899 sq ft

Illustration for identification purposes only, measurements are approximate,
not to scale. FloorplansUsketch.com © 2017 (ID355248)



Austin Homes

White Collar Factory 1a Old Street Yard, London - EC1Y 8AF

0207 981 2586 • info@austinhomes.london • austinhomes.london

AUSTIN
HOMES