



Arundel House, 3 Thornbury Way
London

Guide Price **£525,000**



Arundel House

London

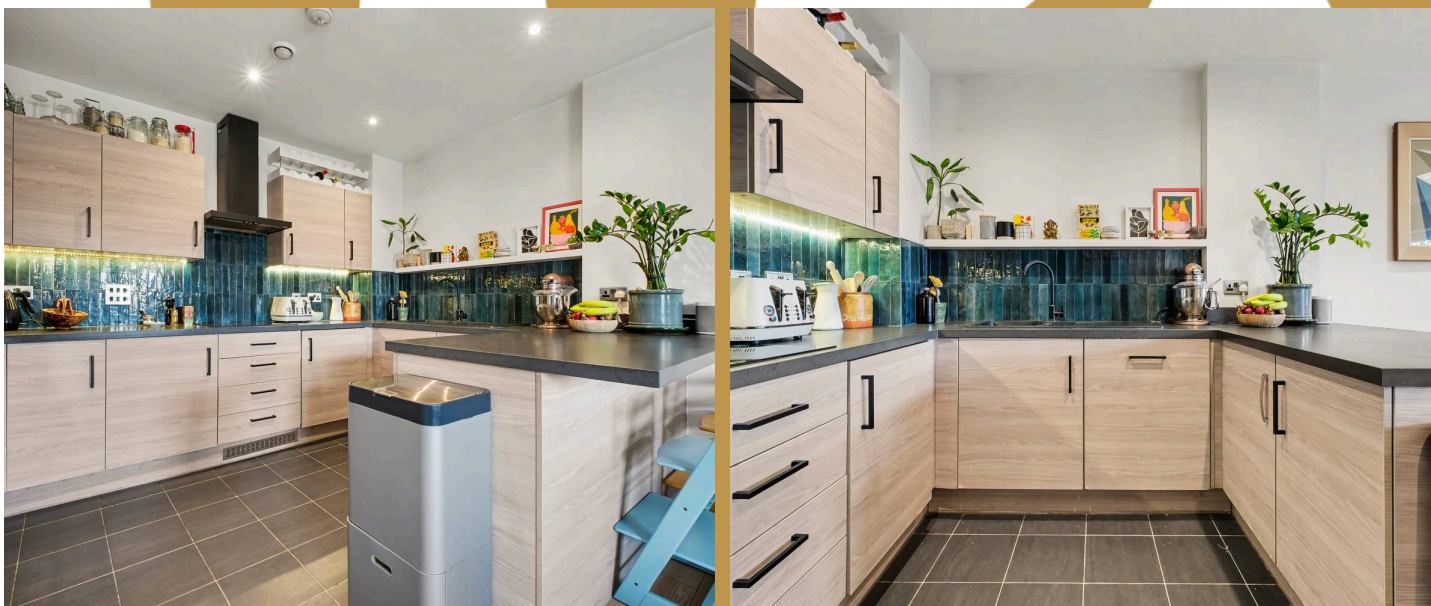
Council Tax band: C

Tenure: Leasehold

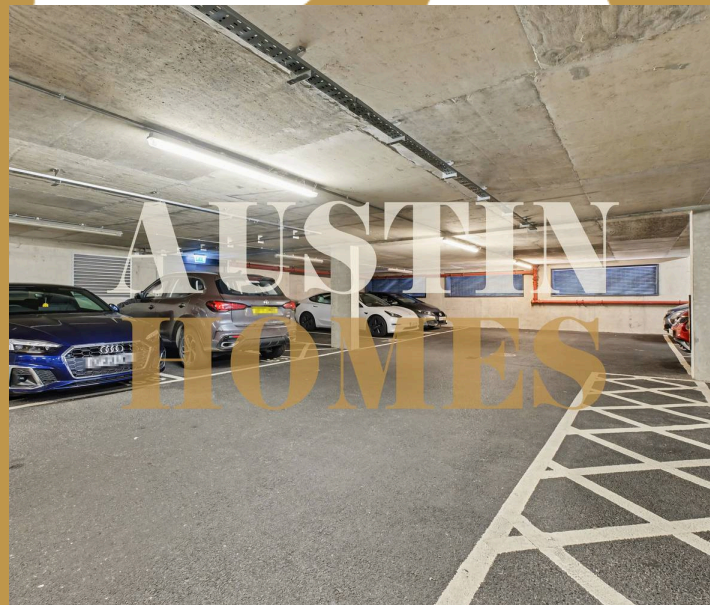
EPC Energy Efficiency Rating: B

EPC Environmental Impact Rating: B

- Private rear garden and decking
- Open Plan Kitchen/Living room
- Over 1100 Sq ft
- Short walk to tube station
- Underground parking available



M

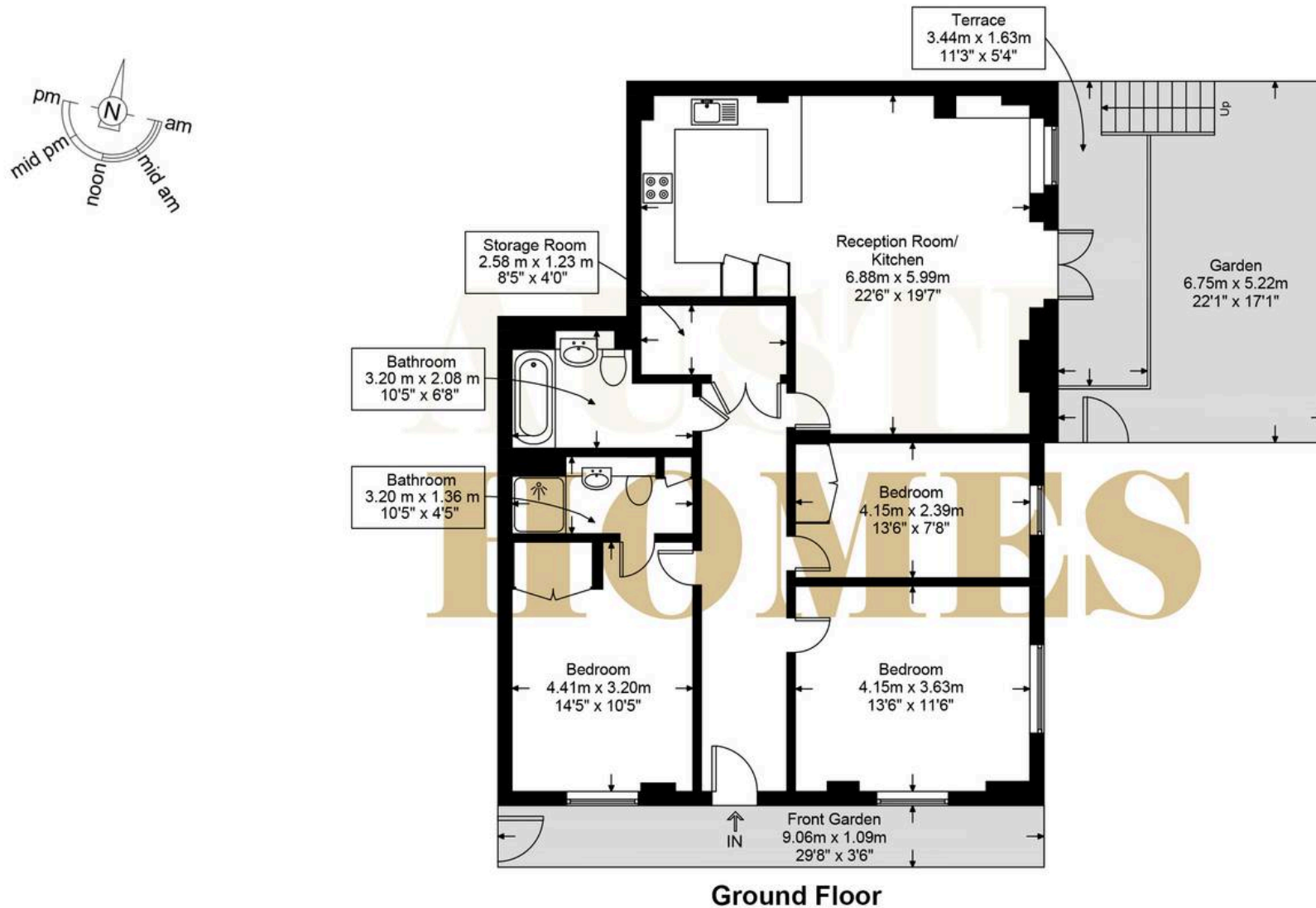


S
M



Thornbury Way, E17

Approximate Gross Internal Area = 1128 sq ft / 104.8 sq m



This plan is for layout guidance only and is not drawn to scale unless stated. All dimensions, including windows, doors, and the Total Gross Internal Area (GIA), are approximate. For precise measurements, please consult a qualified architect or surveyor before making any decisions based on this plan.





Austin Homes

Studio 36 Regus, 167 City Road, London - EC1Y 1AW

0207 981 2586 • info@austinhomes.london • austinhomes.london

AUSTIN
HOMES