



Bezier Apts, 91 City Road, London
London

In Excess of **£650,000**



Bezier Apartments

London

Council Tax band: F

Tenure: Leasehold

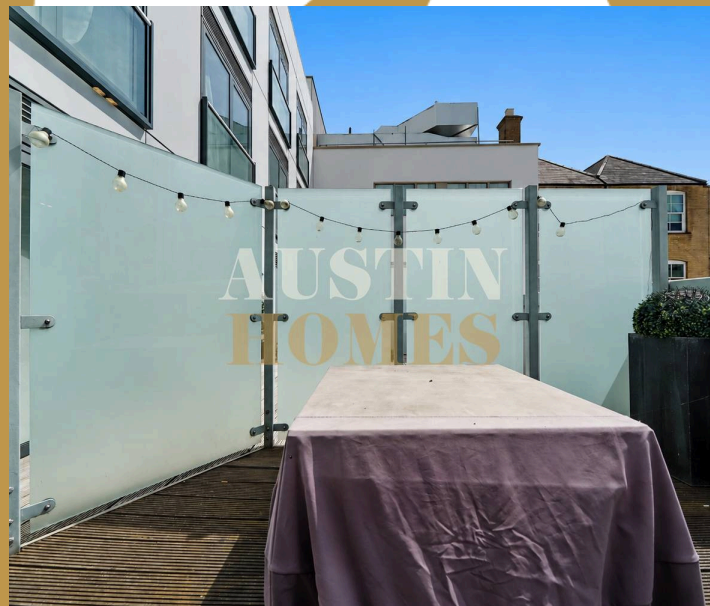
EPC Energy Efficiency Rating: B

EPC Environmental Impact Rating: B

- Over 1,000 Sq ft
- Bright and Airy Throughout
- Private Rear Terrace
- Large Open Plan Living/Dining
- Situated next to Old Street Station
- High Specification throughout

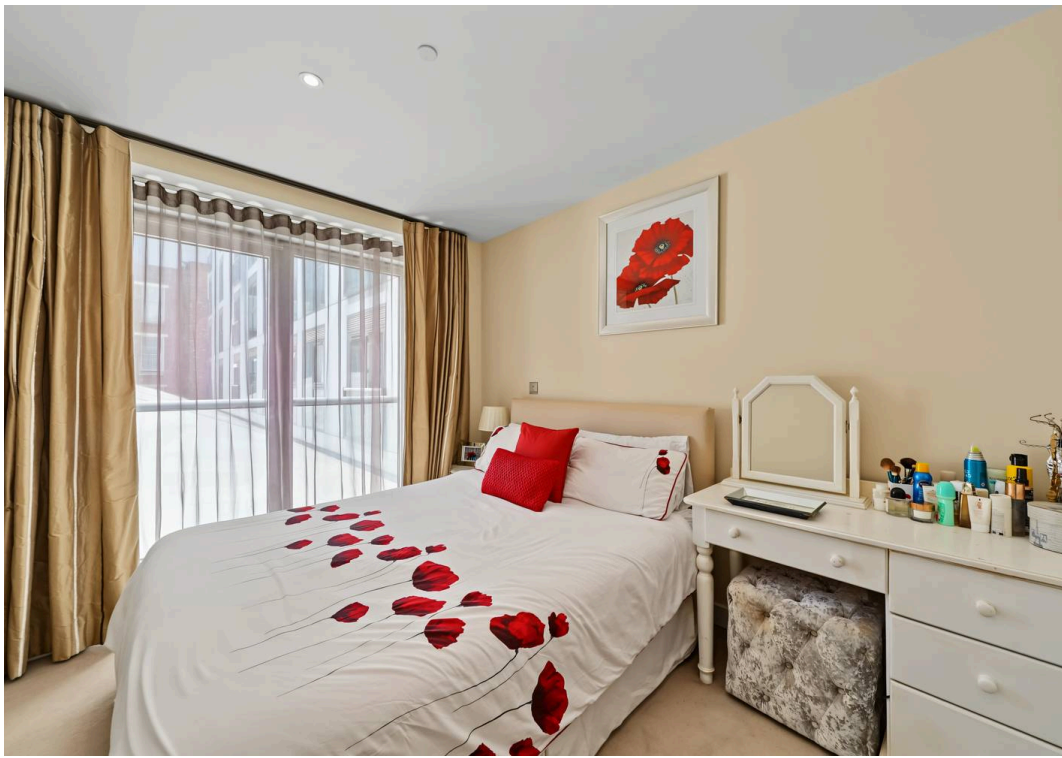


M



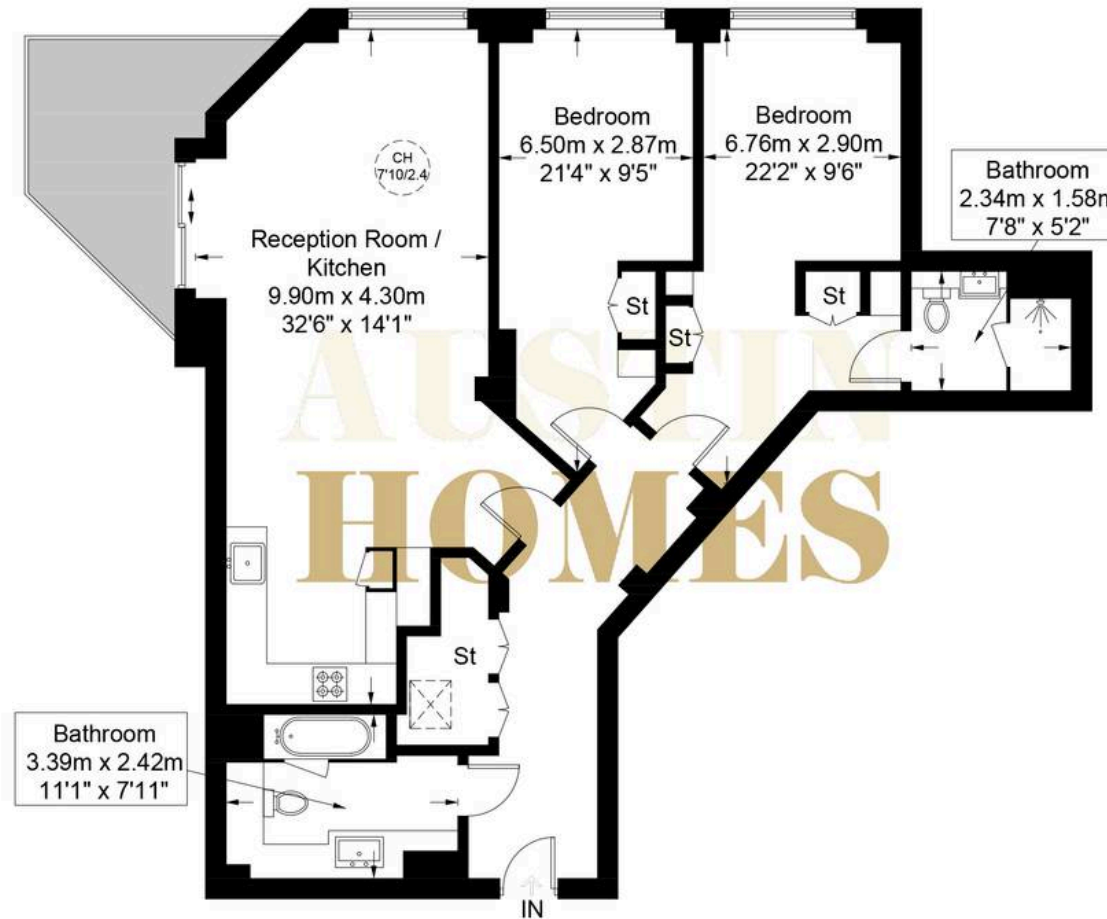
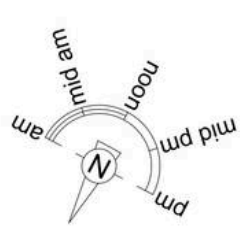
S

M



Bezier Apartments, EC1Y

Approximate Gross Internal Area = 1085 sq ft / 100.8 sq m



Second Floor



This plan is for layout guidance only and is not drawn to scale unless stated. All dimensions, including windows, doors, and the Total Gross Internal Area (GIA), are approximate. For precise measurements, please consult a qualified architect or surveyor before making any decisions based on this plan.



Certified
Property
Measurer



Austin Homes

Studio 36 Regus, 167 City Road, London - EC1Y 1AW

0207 981 2586 • info@austinhomes.london • austinhomes.london

**AUSTIN
HOMES**